



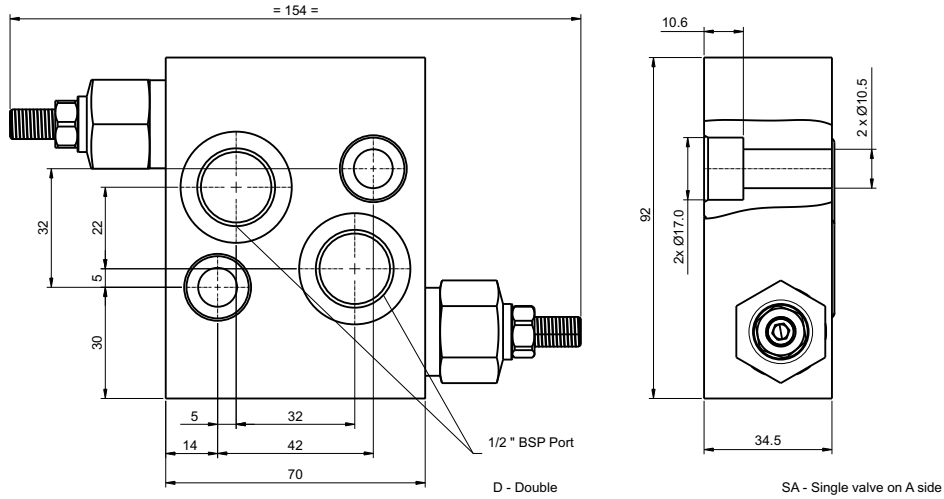
ANCILLARY EQUIPMENT

MXR25S

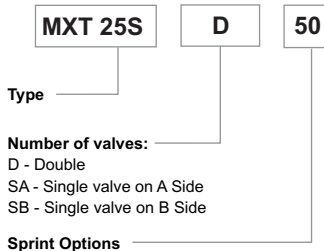
*MOTOR MOUNTED CROSS LINE
RELIEF VALVE FOR MS SERIES MOTORS*



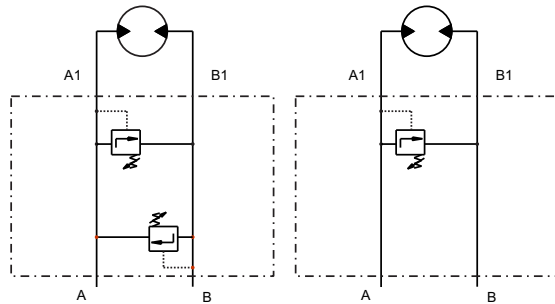
MOTOR MOUNTED CROSS LINE RELIEF VALVE FOR MS SERIES MOTORS



ORDERING CODE



Order Code	Pressure Setting Range (Bar)	Pressure Increase (Bar/turn)	Standard Setting (Bar)
50	10 - 50	7	30
100	20 - 100	12	75
-Omit (Std)	10 - 180	30	90
250	50 - 250	45	130
300	80 - 300	50	150



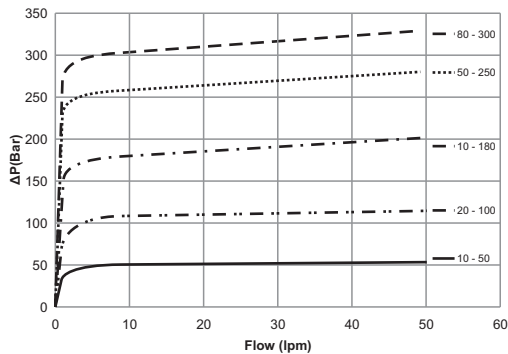
Maximum Pressure : 300 Bar

Rated Nominal Flow : 60 lpm

Mineral based Hydraulic fluids with anti-wear additives are recommended with a viscosity of 35cSt at a temperature of 50° C.

Recommended oil cleanliness ISO 19/14 with a nominal filtration of 25 micron or better.

Tightening torque for mounting screws 35Nm.



The policy of Adan Limited is one of continual development and the right is reserved to alter specifications without notice.



ADAN LIMITED
RIVERSIDE IND. ESTATE BOSTON LINCOLNSHIRE ENGLAND
Tel: +44 (0)1205) 311500
email: sales@adanltd.co.uk | website: www.adanltd.co.uk



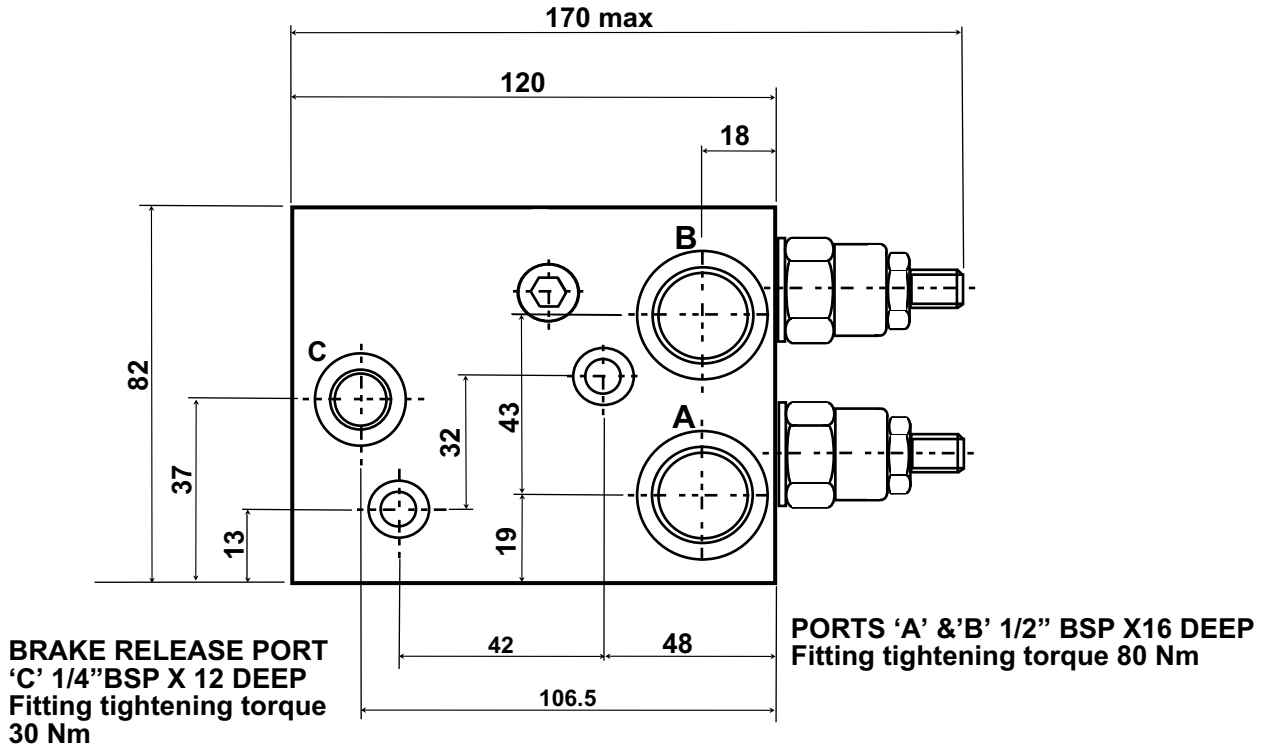


ANCILLARY EQUIPMENT OCV25S

MOTOR MOUNTED OVERCENTRE
VALVE FOR MS SERIES MOTORS



MOTOR MOUNTED OVER CENTRE VALVE FOR MS SERIES MOTORS



Maximum pressure 280 bar 4060 psi
Maximum rated flow 60 lpm
Pilot ratio 4.25:1
Valve supplied complete with mounting screws & 'o' rings.
Valves are not pre-set.
Should a set pressure be required please state at time of order.

Mineral based hydraulic fluids with anti-wear additives are recommended with a viscosity of 35mm²/s at a temperature of 50°C.
Recommended oil cleanliness ISO 19/14 with a filtration level 25 micron or better.
Steel body and valve sections
Tightening torque for mounting screws 35 Nm.

Weight 3 kg

The policy of Adan Limited is one of continual development and the right is reserved to alter specifications without notice.



ADAN LIMITED

RIVERSIDE IND. ESTATE BOSTON LINCOLNSHIRE ENGLAND

Tel: +44 (0)1205) 311500

email: sales@adanltd.co.uk | website: www.adanltd.co.uk



VALVE DETAILS

OPERATION

The check valve section allows free flow into the actuator, then holds and locks the load against movement. The pilot assisted relief valve section will give controlled movement when pilot pressure is applied. The relief section is normally set to open at a pressure of at least 1.3 times the maximum load induced pressure but the pressure required to open the valve and allow movement depends on the pilot ratio of the valve. The pressure required to open the valve and start movement can be calculated as follows:-

$$\text{Pilot Pressure} = \frac{(\text{Relief Setting}) - (\text{Load Pressure})}{(\text{Pilot Ratio})}$$

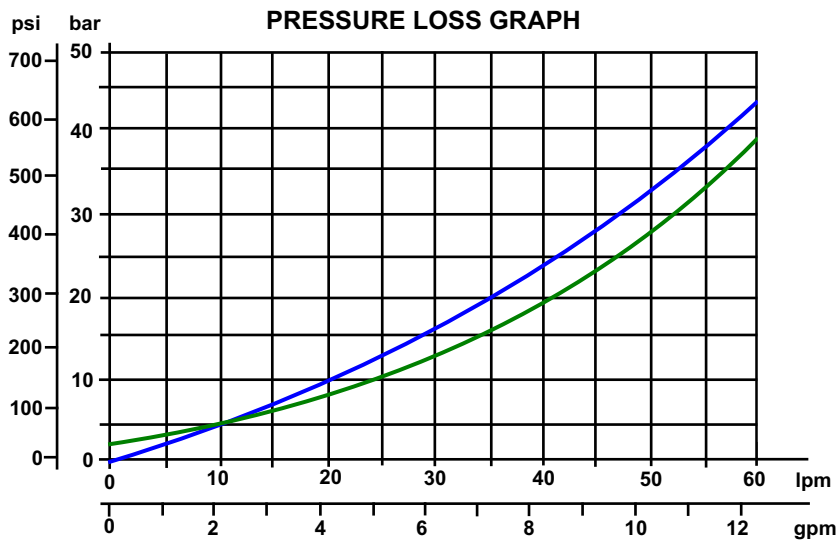
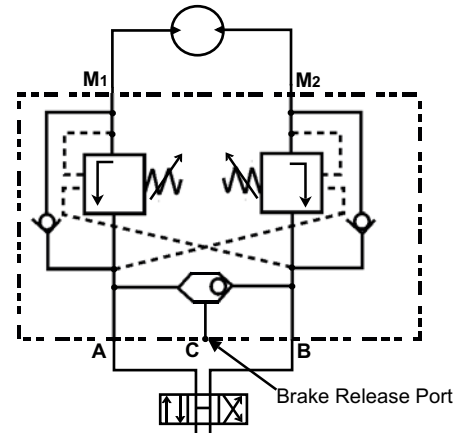
Example:- Pilot Ratio 4.25:1 Relief set at 145 bar (2100psi) and a load pressure of 114 bar (1650 psi)

$$\frac{145\text{bar (2100psi)} - 114\text{bar (1650psi)}}{4.25} = 7.3\text{bar (105psi)}$$

Any increase in pilot pressure will result in an increase in load velocity and a reduction in pilot pressure, slowing and stopping load movement.

When used with an open centre directional valve it will allow thermal expansion relief of the hydraulic fluid.

These motor mounted valves have the load control of dual overcentre valves with the additional advantage of a brake release shuttle valve for smooth safe performance.



The policy of Adan Limited is one of continual development and the right is reserved to alter specifications without notice.



ADAN LIMITED
 RIVERSIDE IND. ESTATE BOSTON LINCOLNSHIRE ENGLAND
 Tel: +44 (01205) 311500
 email: sales@adanltd.co.uk | website: www.adanltd.co.uk

