

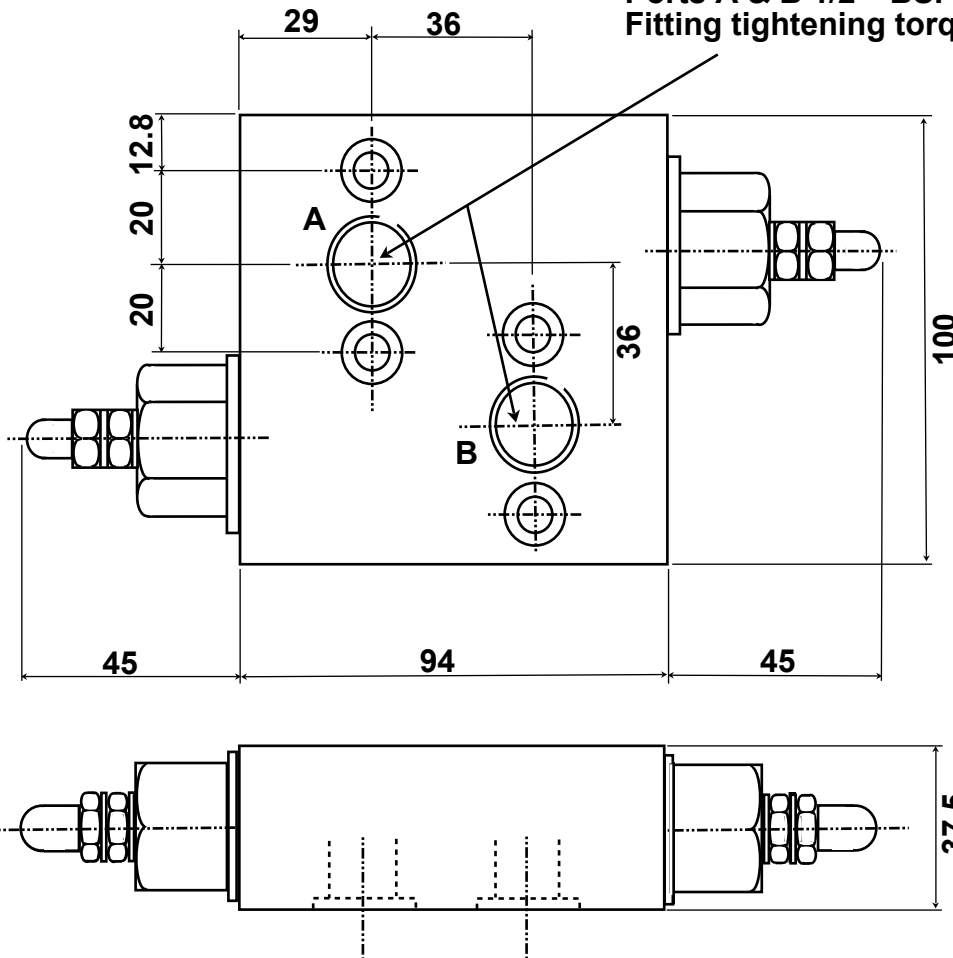


ANCILLARY EQUIPMENT MXR15W



MOTOR MOUNTED CROSS LINE RELIEF VALVE for V & W SERIES MOTORS

Ports A & B 1/2 " BSP x 15 Deep
Fitting tightening torque 80 Nm



Maximum pressure 2000 psi 140 bar

Minimum pressure setting 300 psi 20 bar

Nominal rated flow 60 lpm

Valves supplied complete with mounting screws & 'O' Rings.

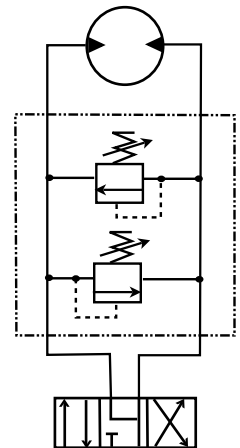
Valves are not pre-set, should a set pressure be required please specify at time of order.

Mineral based Hydraulic fluids with anti-wear additives are recommended with a viscosity of 35 mm²/s at a temperature of 50°C. Recommended oil cleanliness ISO 19/14 with a nominal filtration of 25 micron or better.

Aluminium Body, steel valve sections.

Tightening torque for mounting screws 20 Nm

WEIGHT 3 kg



The policy of Adan Limited is one of continual development and the right is reserved to alter specifications without notice.



ADAN LIMITED

RIVERSIDE IND. ESTATE BOSTON LINCOLNSHIRE ENGLAND

Tel: +44 (01205) 311500

email: sales@adanltd.co.uk

Fax: +44 (01205) 358013

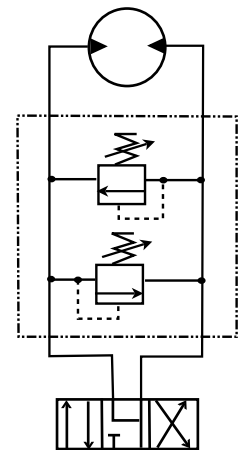
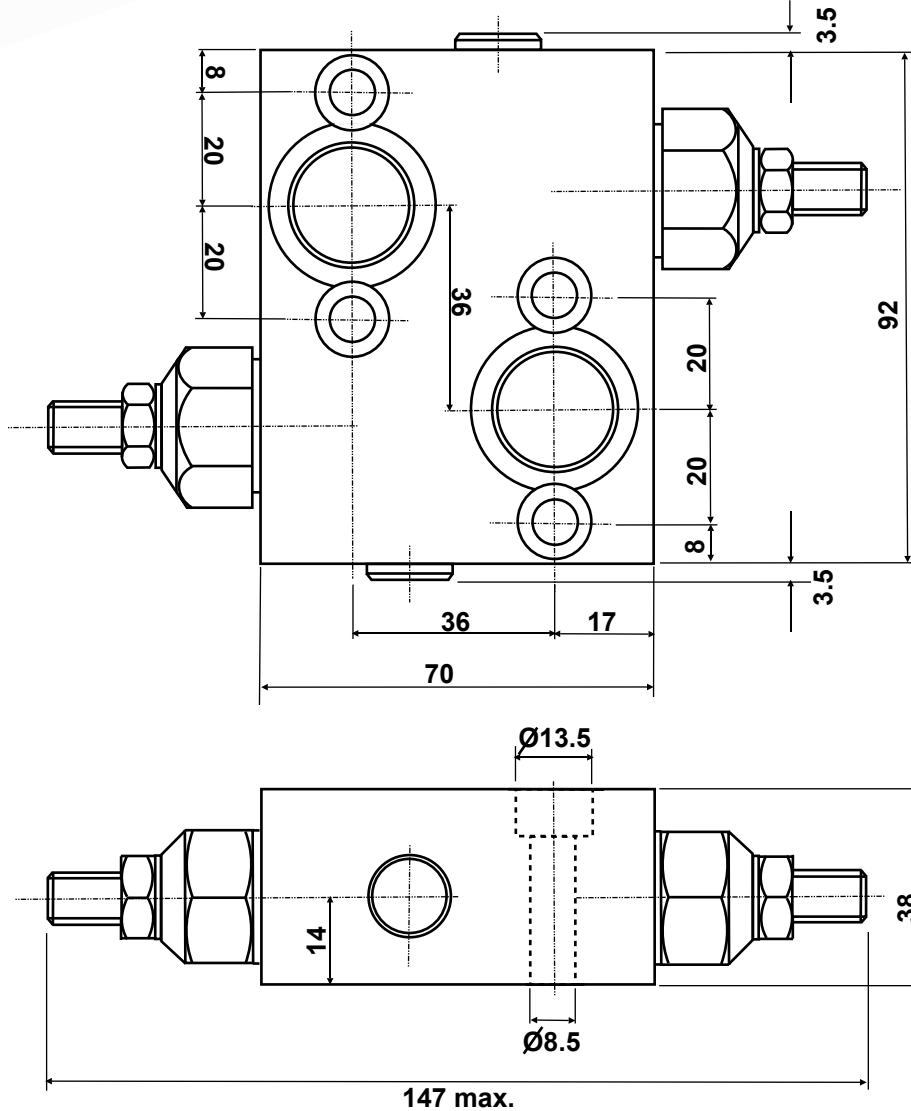
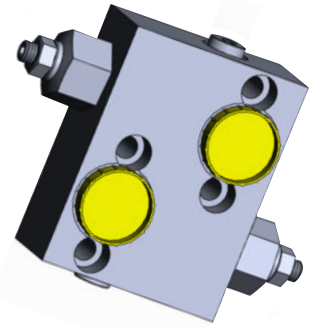
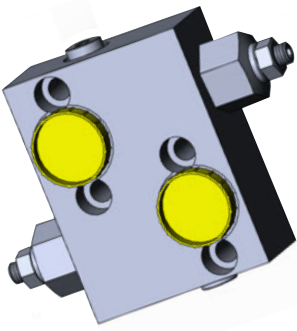
website: www.adanltd.co.uk



ANCILLARY EQUIPMENT

MXR15W-S

MOTOR MOUNTED CROSS LINE
RELIEF VALVE for
V & W SERIES MOTORS



Maximum pressure 210 bar 3050 psi

Minimum pressure setting 50 bar 725 psi

Nominal rated flow 60 lpm

Valves supplied complete with mounting screws & 'O' Rings.

Valves are not pre-set, should a set pressure be required please specify at time of order.

Mineral based Hydraulic fluids with anti-wear additives are recommended with a viscosity of 35 mm²/s at a temperature of 50°C.

Recommended oil cleanliness ISO 19/14 with a nominal filtration of 25 micron or better.

Steel body and valve sections.

Tightening torque for mounting screws 20 Nm

WEIGHT 1.55 kg

The policy of Adan Limited is one of continual development and the right is reserved to alter specifications without notice.



ADAN LIMITED

RIVERSIDE IND. ESTATE BOSTON LINCOLNSHIRE ENGLAND

Tel: +44 (01205) 311500

email: sales@adanltd.co.uk

Fax: +44 (01205) 358013

website: www.adanltd.co.uk



OPERATION

The check valve section allows free flow into the actuator, then holds and locks the load against movement.

The pilot assisted relief valve section will give controlled movement when pilot pressure is applied. The relief section is normally set to open at a pressure of at least 1.3 times the maximum load induced pressure but the pressure required to open the valve and allow movement depends on the pilot ratio of the valve.

The pressure required to open the valve and start movement can be calculated as follows:-

$$\text{Pilot Pressure} = \frac{(\text{Relief Setting}) - (\text{Load Pressure})}{(\text{Pilot Ratio})}$$

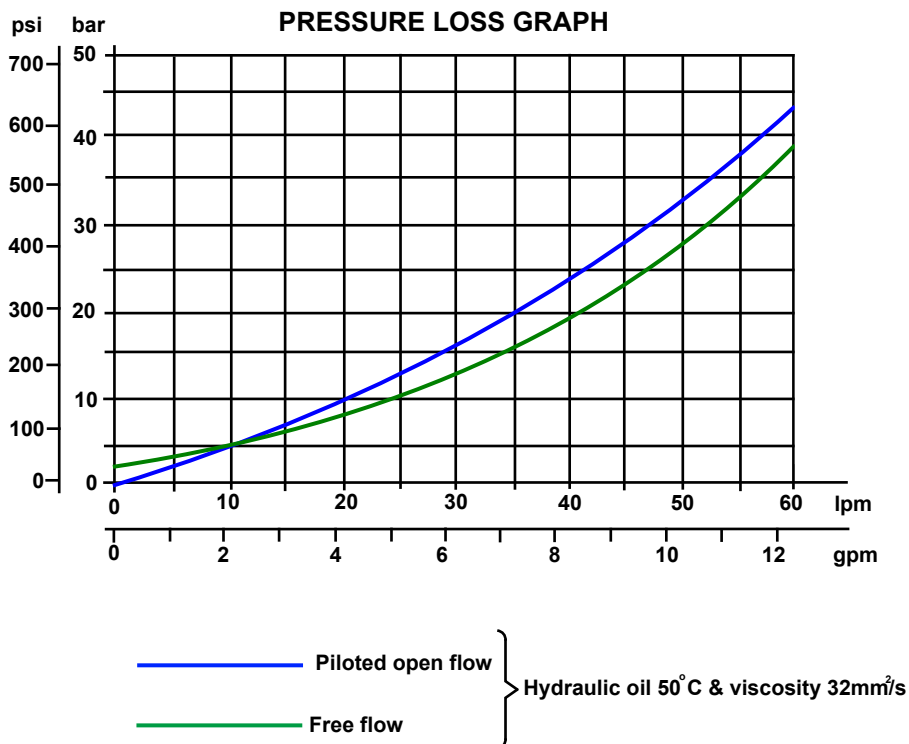
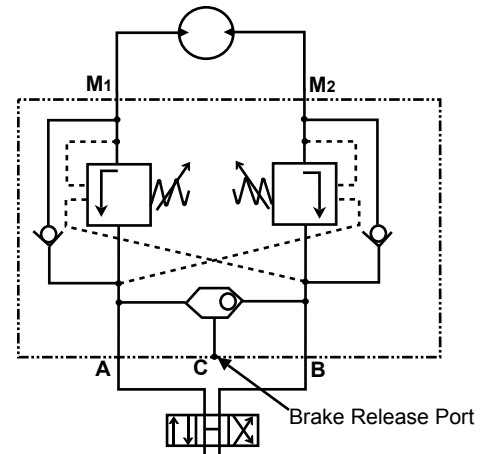
Example:- Pilot Ratio 4.25:1 Relief set at 145 bar (2100psi) and a load pressure of 114 bar (1650 psi)

$$\frac{145\text{bar (2100psi)} - 114\text{bar (1650psi)}}{4.25} = 7.3\text{bar (105psi)}$$

Any increase in pilot pressure will result in an increase in load velocity and a reduction in pilot pressure, slowing and stopping load movement.

When used with an open centre directional valve it will allow thermal expansion relief of the hydraulic fluid.

These motor mounted valves have the load control of dual overcentre valves with the additional advantage of a brake release shuttle valve for smooth safe performance.



The policy of Adan Limited is one of continual development and the right is reserved to alter specifications without notice.



ADAN LIMITED

RIVERSIDE IND. ESTATE BOSTON LINCOLNSHIRE ENGLAND

Tel: +44 (01205) 311500

email: sales@adanltd.co.uk

Fax: +44 (01205) 358013

website: www.adanltd.co.uk

